



HERE FOR  
THE MAKING

# MAKING A PLEDGE

THE PENNSYLVANIA CONVENTION CENTER

**IN THE CITY OF PHILADELPHIA,** known for its history-making meetings, we do hereby establish that all those who gather in our world-class facility have the right to:

FOR EXHIBITORS

1. **EFFECTIVE MANAGEMENT.** By bringing in industry-leader SMG to oversee our beautiful downtown Pennsylvania Convention Center, it's clear we're further dedicating ourselves to transparent, accountable and professional management for your meeting.
2. **INDEPENDENCE AND FLEXIBILITY.** Exhibitors have the freedom to:
  - Set up and tear down within their 600-square foot booth area or show space.
  - Unload their personally owned vehicles using their own equipment, including dollies, luggage carriers, non-hydraulic carts, and two-to-four wheel hand trucks.
  - Use power tools and ladders (up to 6 feet) to set up and tear down exhibits.
  - Install signage and floor coverings.
  - Install and remove non-rented AV equipment.
3. **PERSONNEL CHOICE.** Exhibitors have the freedom to work with as many of their own full-time employees as needed to set up and tear down their booths.
4. **SIMPLE COMPUTER SETUP.** Exhibitors, show managers and customers have the freedom to set up and connect their own computers that are not rented, components and low-voltage power supply equipment for non-public use. (Our skilled labor will need to set up any rented equipment, registration and public-use computers.)
5. **SELF PROMOTION.** Show managers have the freedom to place, move and remove easels, signs, poster board materials and up to six pop-up signs.
6. **EASY DISPLAY SETUP.** Exhibitors, show managers and customers have the freedom to open boxes, stock shelves, set up, plug in, hang up and freely distribute their non-bulk products/literature within their 600-square foot booth area or show space.
7. **DISPLAY MAINTENANCE.** Exhibitors have the freedom to perform maintenance on their own display equipment after the initial setup.
8. **A SUPPORTIVE TEAM.** Each labor union shall establish a core workforce of hospitality focused show labor workers.
9. **SKILLED WORKERS.** Everyone on your team will be highly skilled and will have received specialized training in hospitality services.
10. **PURSUE HAPPINESS.** Make it a great meeting in our state-of-the-art meeting facility in the heart of one of the nation's most dynamic, walkable, historic and visitor-friendly downtowns.



AN MANAGED FACILITY



THE PENNSYLVANIA CONVENTION CENTER

# INDEPENDENCE MADE EASY

The Pennsylvania Convention Center is reinforcing Philadelphia's position as THE BEST VALUE IN THE NORTHEAST. Progressive work rules and streamlined services at the SMG-managed Center provide our customers with just the right amount of flexibility and independence they need, resulting in greater cost efficiencies and a better overall customer experience.

All this in our easily accessible, state-of-the-art meeting facility, right in the heart of one of the nation's most dynamic, walkable, historic and visitor-friendly downtowns.

**PHL** HERE FOR THE MAKING



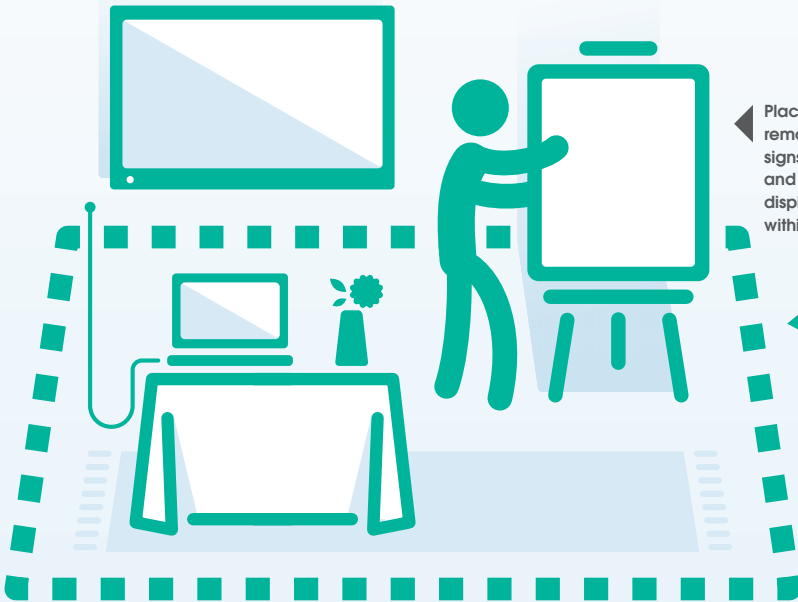
Unload your personally-owned vehicles, driving right up to our docks.



Unload using your own equipment, including dollies, luggage carriers, non-hydraulic carts, and two-to-four wheel hand trucks.



Open boxes, stock shelves, set up, plug in, hang up, and freely distribute your non-bulk products/literature within your booth or show space.



Place, move, and remove your easels, signs, pop-up signs and poster board displays, as needed, within your booth area.

Within your 600-square foot booth area, you or other full-time staff can set up and tear down your display, hang graphics and signage, and install floor coverings.

[LEARN MORE AT MEETPHL.COM](http://MEETPHL.COM)

**PHLCVB**  
Philadelphia Convention & Visitors Bureau

 Pennsylvania Convention Center  
PHILADELPHIA

AN  MANAGED FACILITY

Use your own power tools and ladders (up to 6 feet) to set up and tear down.

